

EVOLVE

1.5

INSTALLATION MANUAL

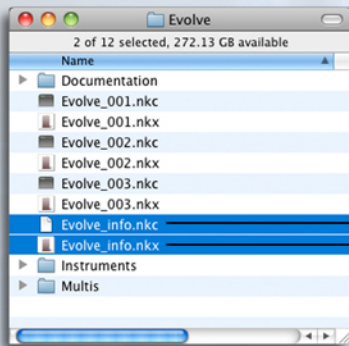


STEP 1 - BACK UP THE "Evolve_info.nkc" AND "Evolve_info.nkx" FILES

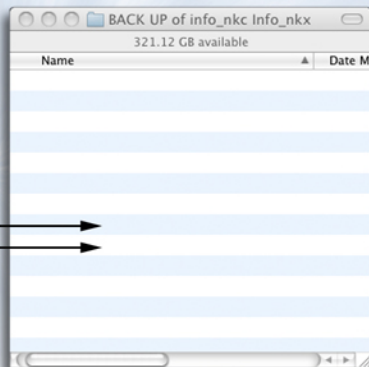
First: Create a "BACK UP " folder.

Next: Locate the Heavyocity Evolve install folder on your system.

Last: Move the "Evolve_info.nkc" and "Evolve_info.nkx" files into the new backup folder.

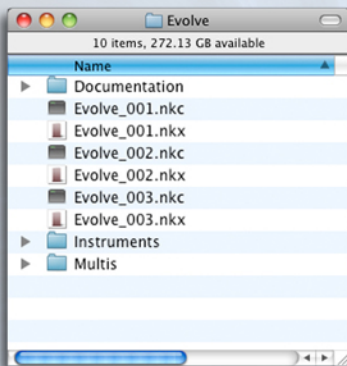


Computer/Heavyocity/Evolve/

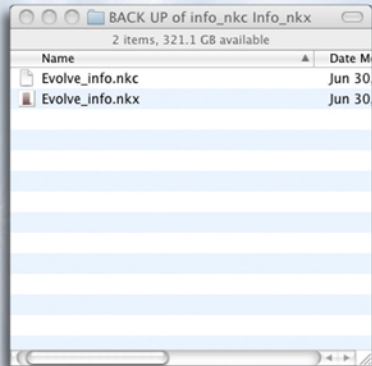


Backup Folder

Verify Folder Structure Below



Your Evolve install folder should now look like this.

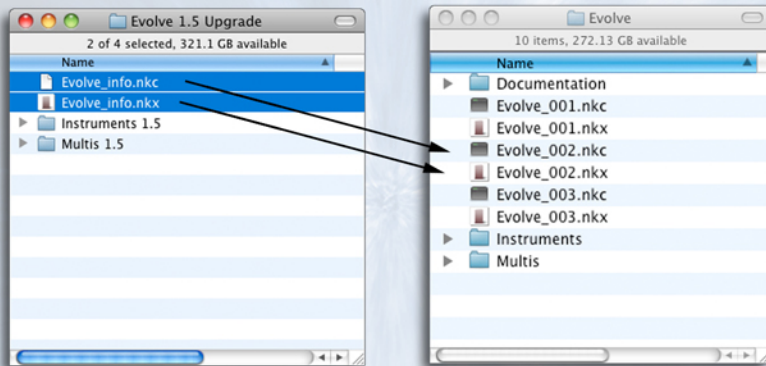


Your Back Up folder should now look like this.

STEP 2 - DRAG NEW "Evolve_info.nkc" AND "Evolve_info.nkx" FILES INTO THE EVOLVE FOLDER

First: Locate the "Evolve_info.nkc" and "Evolve_info.nkx" in the downloaded "Evolve 1.5 Upgrade" folder

Next: Move the "Evolve_info.nkc" and "Evolve_info.nkx" files from the downloaded "Evolve 1.5 Upgrade" folder to your Heavyocity/Evolve directory.



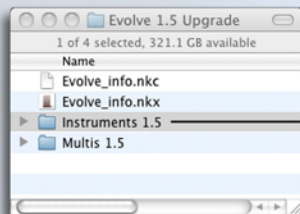
../Heavyocity/Evolve/

EVOLVE
1.5 INSTALLATION

MOVE ONTO STEP 3 →

STEP 3 - MOVE THE "INSTRUMENTS 1.5" FOLDER INTO THE EXISTING INSTRUMENTS FOLDER

*****DO NOT OVERWRITE THE EXISTING INSTRUMENTS FOLDER*****



Evolve 1.5 Installation Folder



../Heavyocity/Evolve/Instruments



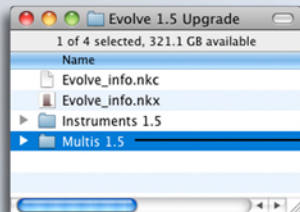
Your Evolve "Instruments" folder will look like this after you copy the Instruments 1.5 folder to it.

EVOLVE
1.5 **INSTALLATION**

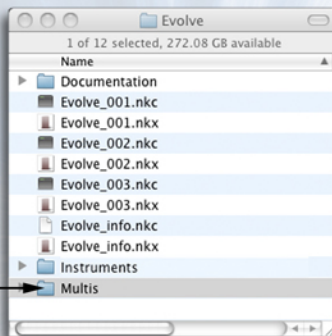
MOVE ONTO STEP 4 →

STEP 4 - MOVE THE "MULTIS 1.5" FOLDER INTO THE EXISTING "MULTIS" FOLDER

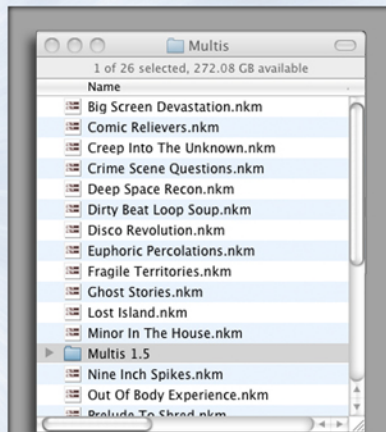
DO NOT OVERWRITE THE EXISTING MULTIS FOLDER



Evolve 1.5 Installation Folder



../Heavyocity/Evolve/Multis



Your "Multis" folder will look like this after you copy the Multis 1.5 folder there.

EVOLVE
1.5 INSTALLATION

If you have any questions about installation, please contact us at
support@heavyocity.com